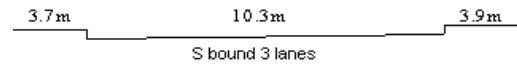


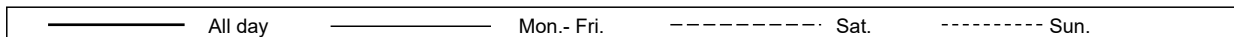
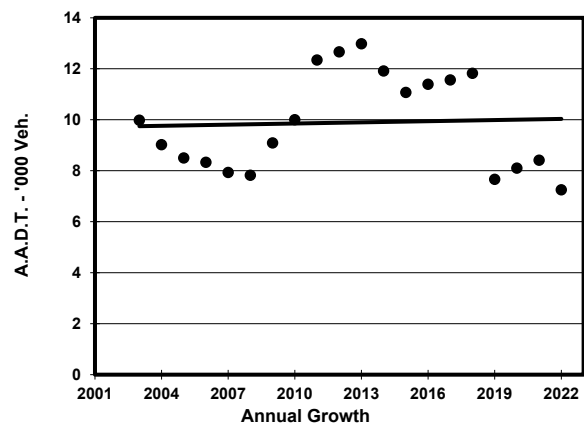
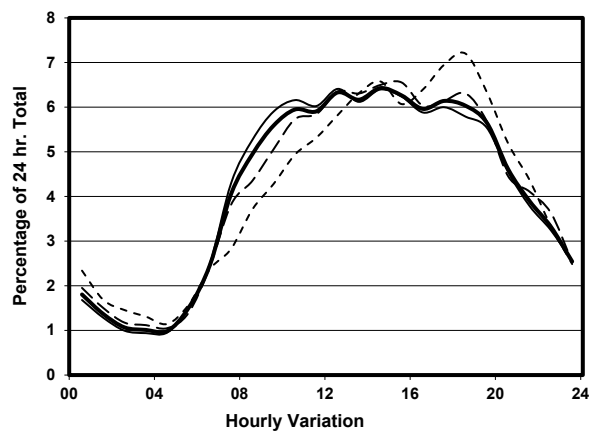
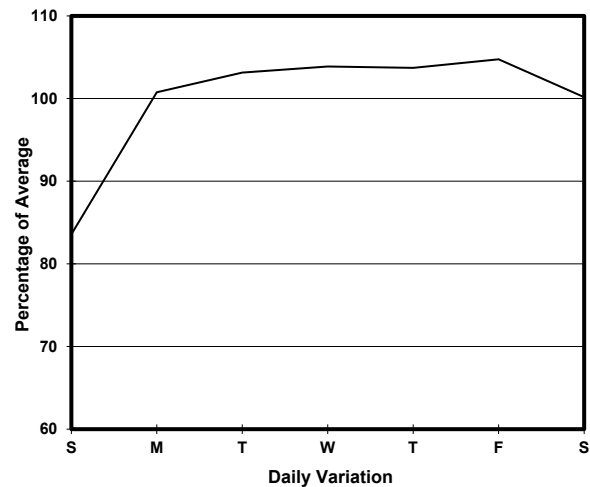
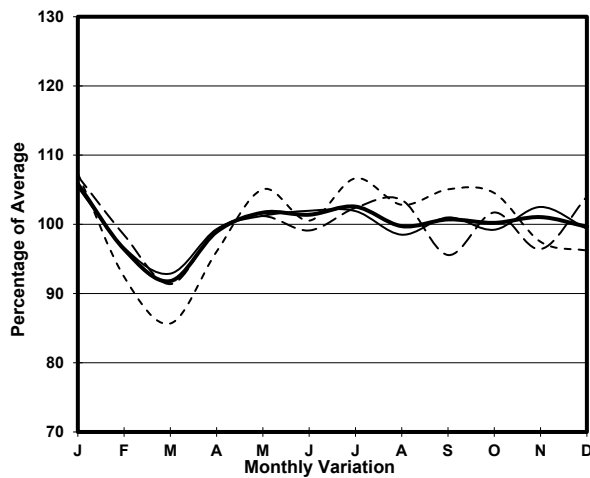
YEAR

2022

LINK TSEUK LUK ST (from CHOI HUNG RD to KING FUK ST)

CORE STATION  
ROAD NETWORK  
ROAD TYPE3105  
MINOR  
LOCAL DISTRIBUTOR

## 1. TRAFFIC FLOW VARIATION AND GROWTH



## 2. TRAFFIC CHARACTERISTICS (BY DIRECTION)

Parameter	All - Day	Mon. - Fri.	Sat.	Sun.
<b>SOUTH BOUND</b>				
A.A.D.T.	7250	7550	7330	6130
R 12 / 24 - %	69.8	70.5	69	66.4
R 16 / 24 - %	87.3	87.6	86.9	85.7
AM Peak Hour	0900-1000	0900-1000	0900-1000	0900-1000
One-way flow at AM peak hour	410	450	370	260
T - % (AM)	-	-	-	-
PM Peak Hour	1700-1800	1700-1800	1800-1900	1800-1900
One-way flow at PM peak hour	450	450	460	440
T - % (PM)	-	-	-	-
Prop.of commercial vehicles - 16 hr.	-	-	-	-
 A.A.D.T.	-	-	-	-
R 12 / 24 - %	-	-	-	-
R 16 / 24 - %	-	-	-	-
AM Peak Hour	-	-	-	-
One-way flow at AM peak hour	-	-	-	-
T - % (AM)	-	-	-	-
PM Peak Hour	-	-	-	-
One-way flow at PM peak hour	-	-	-	-
T - % (PM)	-	-	-	-
Prop.of commercial vehicles - 16 hr.	-	-	-	-

## 3. OTHER INFORMATION AND COMMENT